

SCI SYSTEM

The Sensor Communication Interface (SCI) System is a multi-configurable monitoring solution for the toxic chemicals at your facility.



1

It all starts with a sensor.

ChemDAQ's industry-leading sensor technology is hard-wired into the SCI system to provide accurate readings for specific, hard-to-detect hazardous gases. Alternatively, SCI customers have the option to elect for a Remote Sensor Mount for intrinsically safe applications and/or increased location capabilities via RS-485 output.

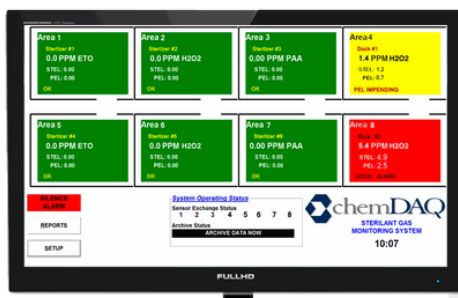
- ▶ Ethylene Oxide
 - LEL Sensor
 - Oxygen
- ▶ Hydrogen Peroxide
- ▶ Peracetic Acid

2

Data is collected and available for output.

Real-time data is collected from the sensor and fed directly into the SCI, which features two sets of signal relays to independently control remote audio and/or visual alarms. The SCI features several data output modes.

- ▶ Modbus ASCII
- ▶ 4-20mA Current Loop
- ▶ RS-485



3

Real-time data is sent to display.

The SCI can connect to a ChemDAQ Data Acquisition System (DAQ) to continuously monitor and display readings from up to 32 sensors at once. Alternatively, data can be shared to a comparable programmable logic controller (PLC) to engage abatement systems and/or facility alarms.



300 Business Center Drive
Pittsburgh, PA 15205



Sales@ChemDAQ.com



ChemDAQ.com